

# AP-U Series



## Efficient Oil-Fired Steel Boiler

- **Up to 86.2% AFUE**
- **83 to 117 Net BTUs**
  - In 2 sizes
- **Chimney vented**
- **Hydrolevel® boiler control**
  - Energy-saving “thermal purge” feature circulates residual warm water in heating system prior to firing boiler
  - Thermal targeting economy setting
  - Circulator hold enhanced condensing protection
- **Vertical firetube exchanger, 1/4” boiler-plate steel**
  - Meets the ASME Boiler and Pressure Vessel Code
- **Tankless coil available**
  - For domestic hot water
- **Enhanced combustion chamber seal**
  - Located between shell and base, provides increased efficiency
- **Designed for ease of service**
  - Extended coil & fittings, removable jacket top permits access without disconnection of piping
- **Lifetime limited warranty**
  - See your installing contractor for more warranty information



**New Yorker**<sup>®</sup>  
RESIDENTIAL HEATING BOILERS

MADE IN  
  
U . S . A .

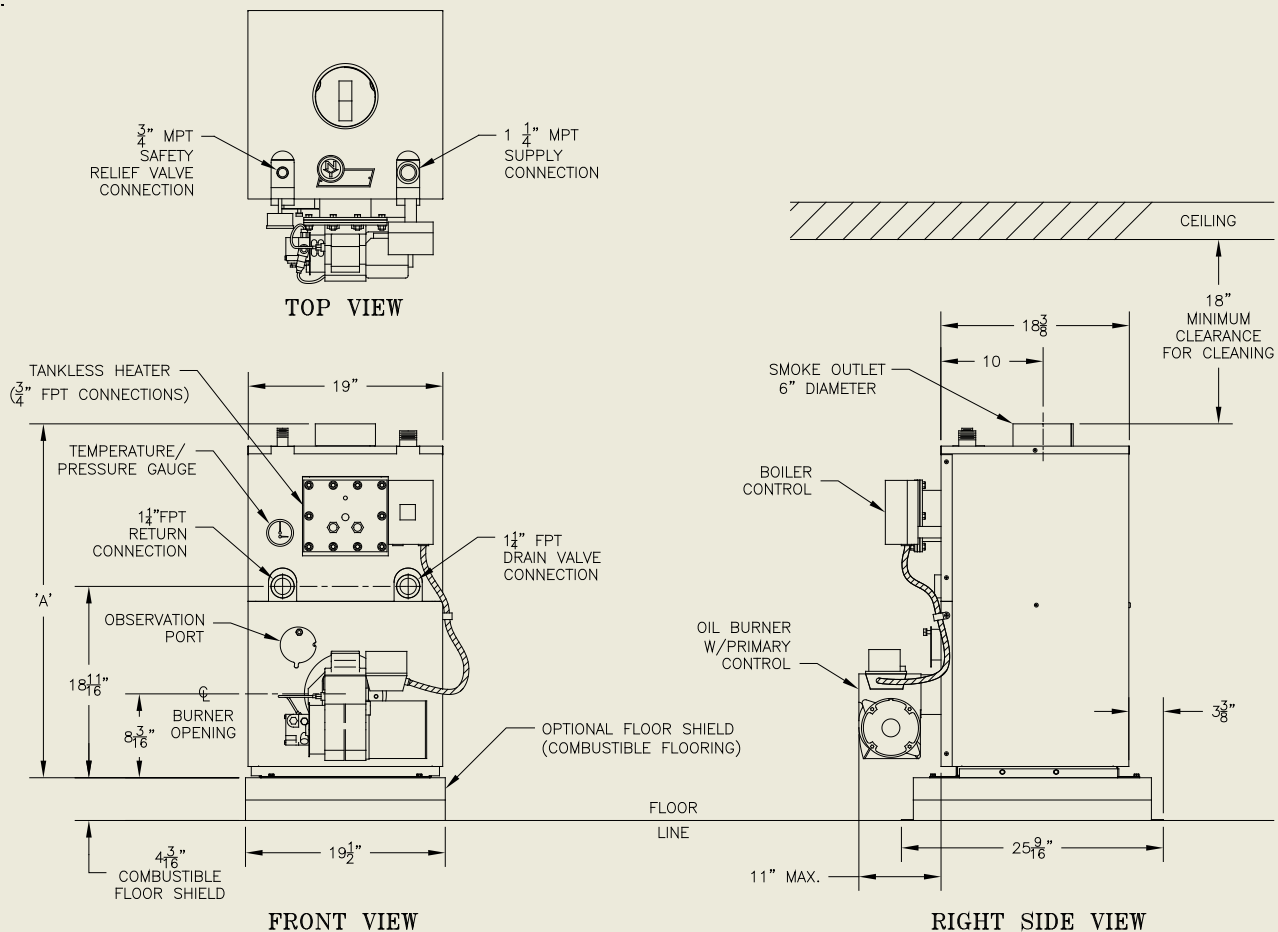
# Ratings, Specifications, and Dimensions



Model	Burner Capacity		DOE Heating Capacity (MBH)	AHRI Net Ratings (MBH)	Minimum Chimney Requirements			AFUE	Dim. "A" (in.)	Water Cap. (gal.)	Approx Ship Wt. (lbs.)
	GPH	MBH			Round In. Dia.	Rectangle In. x In.	Height Ft.				
<b>AP-110U</b>	0.75	110	95	83	6	8 x 8	15	86.2%	34-9/16	10.1	300
<b>AP-154U</b>	1.10	154	139	117	6	8 x 8	15	86.0%	41	15.4	355

## Standard Features

- Fully packaged
- Hydrostat® 3250 Plus
- 3450 RPM flame retention Beckett® oil burner
- Beckett GeniSYS® primary control
- Taco 007e® circulator
- Clean cut fuel pump
- Tridicator
- Relief valve
- Drain valve



- NOTES:
1. CIRCULATOR SUPPLIED LOOSE – MAY BE INSTALLED ON SUPPLY (RECOMMENDED) OR RETURN (ACCEPTABLE ALTERNATIVE) PIPING.
  2. RETURN FITTINGS AND DRAIN VALVE SHIPPED LOOSE.

